

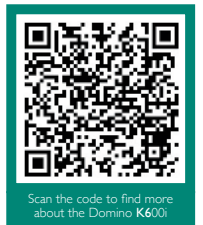


The K600i ink jet printer

It's just so versatile



Simple, productive and cost effective
printer for variable data printing
onto a wide range of media.



Scan the code to find more
about the Domino K600i.

Domino. Do more.

It's just so versatile

Printing on to a wide range of uncoated and coated, as well as plastic media, the **K600i** combines productivity with 600dpi print quality.

The **K600i**, configured to the print width required, can be integrated into an existing handling system for digital imprinting or can be in the format of a monochrome digital press.

The added-value offering to your customers will increase sales and profitability.

A diverse range of applications

Designed for sheet or web – printing onto labels, tags, tickets, forms, security products and direct mail.



Personalisation of high quality pre-printed labels.



Printing barcodes and numbering in a defined space, including micro-printing for small text requirements to 3pt text and option to print at 1200dpi.



The **K600i** system can easily be provided to add digital foiling, a unique solution for brand protection and product embellishment.



Greener credentials

Domino's commitment and investment in sound environmental practices means we frequently exceed the increasingly demanding governmental, industry and company standards and regulations. We are committed to minimising the consumption of natural resources and energy and the creation of waste. Our products are RoHS and WEEE compliant so that they are recyclable.

K600i

The **K600i** is supplied with UV curable, LED curable and aqueous inks representing an efficient use of our natural resources. Although UV curable inks are chemicals and need to be used correctly, they offer significant environmental benefits compared to solvent alternatives. Solvent inks include up to 95% volatile solvents that evaporate into the environment and require regular print head cleaning. **K600i** UV curable inks contain 1% volatile solvents.

Configured for your requirements

Modular

Print widths range from a single print module, printing an image area of 108mm (4.25") up to seven dual print modules printing 782mm (30.81") as standard.

Print head alignment and image stitching is achieved through the **i-Tech StitchLink** micro-motor controller technology. It is easy and accurate for rapid set up of high quality images.

Standalone

Domino can supply a number of alternative standalone digital print solutions, including reel to reel or integrated on to a mail or sheet-fed line.

Easy to Integrate

The compact print head comes complete with mounting bracket and **i-Tech CleanCap** maintenance station.

Options include a roller section or complete web extension section, enabling simple integration into an existing machine. This can include mounting on a printing press, finishing line or a mail base... we just need some space and good material control to convert you to digital.

Print Module	Print width (mm)	Print width (inches)
x 1 or 2	108	4.25
x 2 or 4	220	8.69
x 3 or 6	333	13.11
x 4 or 8	445	17.54
x 5 or 10	558	21.96
x 6 or 12	670	26.39
x 7 or 14	782	30.81



It is all about cost of ownership

Simple

Compared with other digital printing technologies, Piezo ink jet with UV curable, LED curable or aqueous ink is a non-contact form of printing with few moving parts. There are fewer requirements for manual intervention. The result is enhanced reliability.

Pay for what you use

The **K600i** has few consumable parts. The ink and flush are charged based on the amount used. There is also the potential to reduce costs for longer run jobs through variable data imprinting, thereby limiting the amount of digital ink required and maximising profit per job.



Small enclosure

Use what you need

Select one of four drop sizes (6, 7, 11, 14pl) for each job. Optimise print quality for a given media or reduce production costs by controlling ink usage.

Productivity productivity productivity

Less maintenance time

The revolutionary **i-Tech CleanCap** automated print head cleaning and capping technology means the **K600i** almost maintains itself. **CleanCap** is a clean and consistent controlled process: there is no time consuming daily manual print head cleaning. The risk of print nozzle blockages are dramatically reduced, which all adds up to being able to run more production. When not in operation the print head is automatically moved into the **CleanCap** where the head is wiped and capped ready for the next use.

It keeps operating

We want to keep the print heads running. The unique **i-Tech ActiFlow** ink circulating system ensures that the ink is always moving around the print head, even when the print head has stopped. **ActiFlow** helps to degas the ink, preventing air bubbles forming that can impact nozzle performance. More time is spent on printing and less is spent on maintenance.

It is quick

Operating at printing speeds of up to 150 m/min (492ft/min) at 600 x 600dpi and 220m/min (720ft/min) in rapid mode (600 x 300dpi), the **K600i** dual module sets new standards for printing onto a wide range of substrates.



Workflow efficiency – It is not just about printing

Industry Standard Ink Jet & Line Controller

The Domino **Editor™ GT** PC based controller, with over 2,000 installations, is available for receiving and configuring data files for printing. A number of data formats can be received. In addition data creation tools are available, such as cut and stack and step and repeat numbering. To meet your application needs, a range of machine control options are available, including Mail Sort and in-line camera verification. Network solutions are available for remote data preparation and set-up.



Data Hungry

For applications with significant variable data content or where a PDF workflow is preferred, we have the Domino **Editor™ RIP**. This modular solution can be configured to process the maximum data required.

Includes options for PDF files as well as IPDS and AFP data streams.



Domino. Do more.

A quick tour around the K600i

intelligent Technology

i-Tech components combine to create a system altogether more flexible and reliable.

K600i print head including three modules with **i-Tech StitchLink** micro-motor control

i-Tech CleanCap automated cleaning and capping station

Editor™ GT User Interface (optional)

Flush system enclosure for **CleanCap**

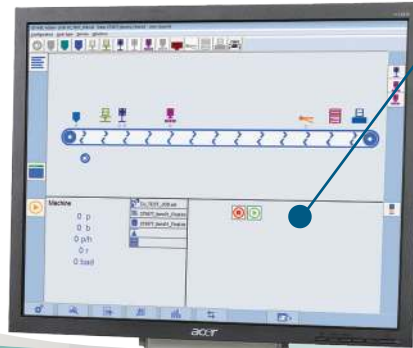
i-Tech ActiFlow ink system

TCP/IP connectivity

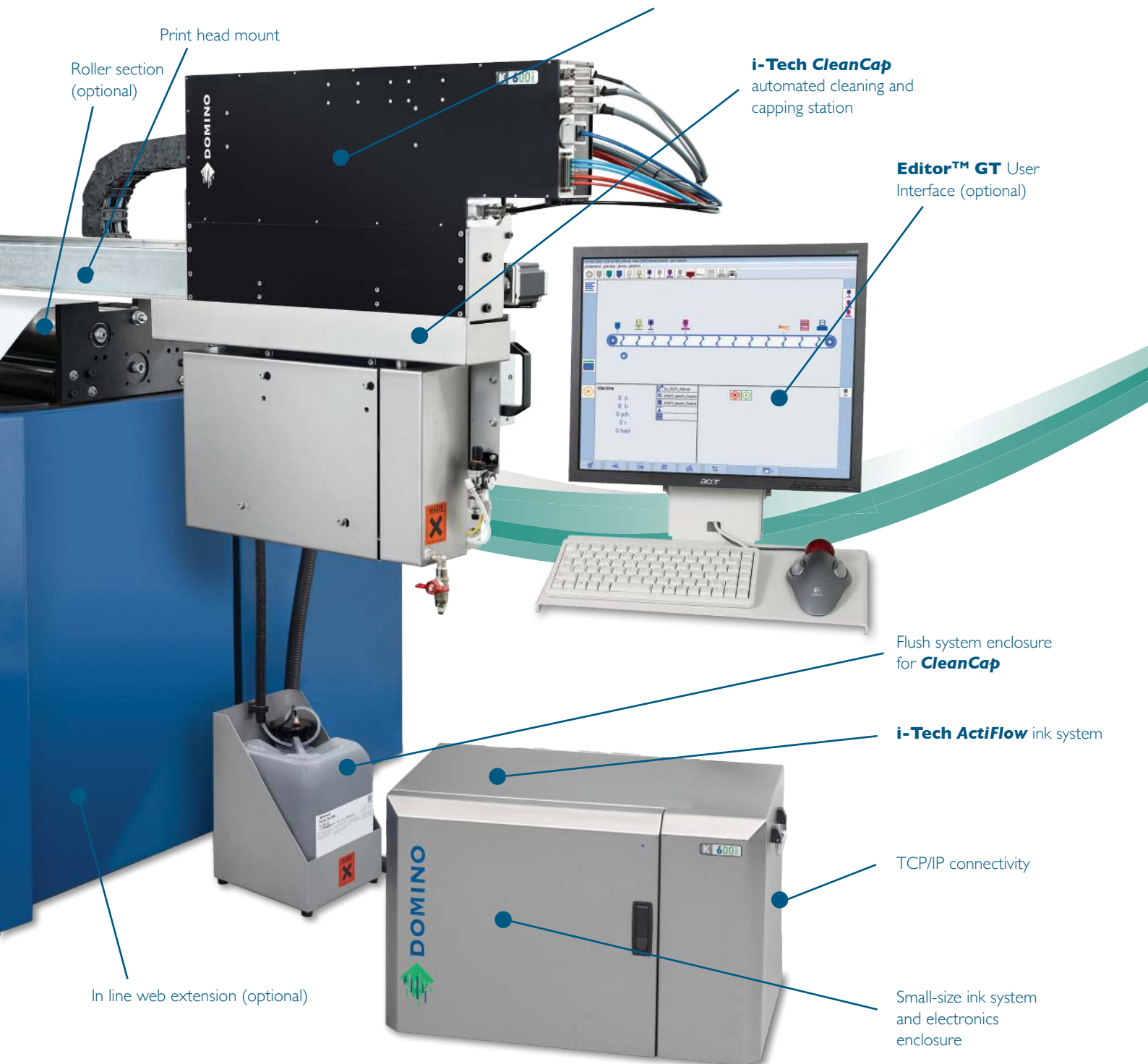
Small-size ink system and electronics enclosure

Print head mount

Roller section (optional)



In line web extension (optional)



Domino. Do more.



Technical Specification:

10 litre ink supply box for up to 3 head,
333mm/13" wide print systems

Operational Capability

Maximum line speed Single	37.5 - 150m/min (123 - 492 ft/min)
Maximum line speed Dual	150 - 220m/min (492 - 720 ft/min)
Print resolution	300dpi - 600dpi - 1200dpi options
Nominal drop sizes	Selectable 6, 7, 11, 14pl (14pl drop only at reduced speeds)
Image width	108mm (4.25") to 782mm (30.81")
Nominal media to print head distance	1.0mm (0.04")
Media	Coated and uncoated paper, foil and plastic

Ink System

Ink Supply	1 - 10 litres (ink dependent)
Ink Type	UV Curable / LED Curable / Aqueous

Print Capability

Editor: GT: Windows® True Type, Adobe, OCR, Barcodes: Australian Post Custom, Australian Post Redirect, Australian Post Reply Paid, Australian Post Routing, CodaBar 2 widths, Code 11, Code 2 of 5 Data Logic, Code 2 of 5 IATA, Code 2 of 5 Industry, Code 2 of 5 Interleaved, Code 2 of 5 Matrix, Code 2 of 5 Standard, Code 39, Code 39 (ASCII), Code 93, Code 93 (ASCII), Code 128, Code 128A, Code 128B, Code 128C, DPD Code, DP Identcode, DP Leitcode, EAN13, EAN13P2, EAN13P5, EAN14, EAN8, EAN8P2, EAN8P5, EAN128, Flattermarken, GS1-128, GS1 DataBar, GS1 DataBar Expanded, GS1 Data Bar Expanded Stacked, GS1 DataBar Limited, GS1 DataBar Stacked, GS1 DataBar Stacked Omnidirectional, GS1 Data Bar Truncated, ISBN, Italian Postal, Japanese Postal, KIX, Korean Postal, LOGMARS, MSI, NVE-18, Pharmacode One-track, Pharmacode Two-track, PLANET 12, PLANET 14, Plessey, Plessey Bidirectional, PZN, Royal Mail 4State, SSCC-18, Telepen, Telepen Alpha, UCC/ EAN 128, UPC 12, UPC 25, UPC A, UPC-A P2, UPC-A P5, UPC-E, UPC-E P2, UPC-E P5, USPS Intelligent Mail Barcode, USPS PostNet5, USPS PosNet6, USPS PostNet9, USPS Post-Net10, USPS PostNet 11, USPS PostNet12.

2D Codes: Data Matrix, MicroPDF417, PDF417, PDF417 Truncated, QR-Code

Graphics: .bmp, .pcx, .tif, .jpg, .gif, .pdf

Editor™ RIP: IPDS, AFP data streams & PDF files

Key Dimensions

Conduit length - main enclosure to print head	4m (13') for 1x1 module, 5m (16') for 1x2 or 1x3 module, otherwise 4.25m (14')
Conduit length - main enclosure to flush bottle	4m (13')
1x3 head print bar	1330w x 354.4d x 705.4h mm (height dimension excludes conduit)
Small-size 10L ink supply box	640w x 441d x 425h mm (dimensions excluding conduit radius)
Mid-size 10L ink supply box	800w x 400d x 1810h mm (dimensions excluding conduit radius)
Flush holder	234w x 234d x 360h mm (dimensions excluding air regulator and conduit radius)

Services

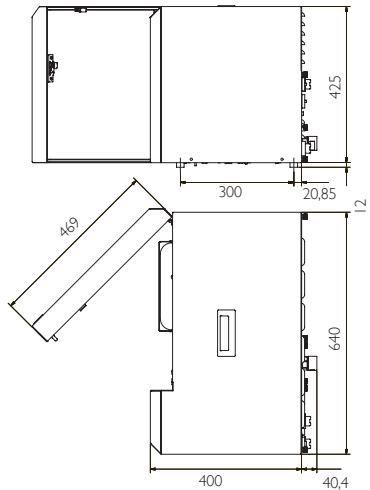
Electrical	K600i	110-240v AC50-60Hz 10A (auto ranging)
	UV System	Operation dependent, normally 380-420v three phase drop
Compressed Air		6-8 bar clean dry supply

Environment

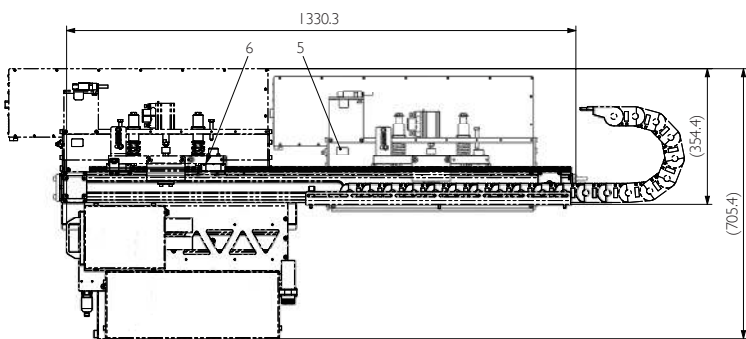
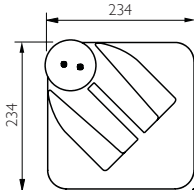
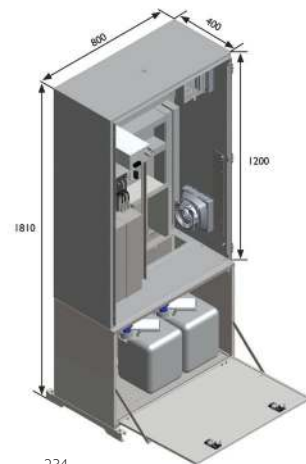
Optimum temperature range	20-30°C (68-86°F)
Optimum humidity range	40-60%

Ancillary Equipment

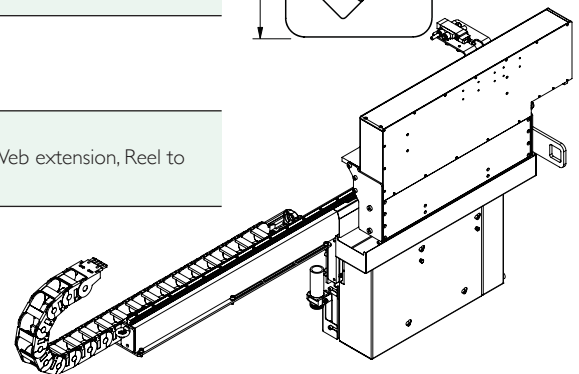
Print head guarding, UV dryer, LED UV pinning, Web cleaner, Web guide, Anti-static bars, Mail base, Web extension, Reel to reel system, Arched roller section, Corona treatment.



Mid-size ink supply box for all print systems above 3 print modules



Dimensions for 333/445mm wide system



Print width to	Head Mount lengths
108mm (4.5") Single	1339mm*, 1800mm, 2215mm
333mm (13") Single	1339mm*, 1800mm, 2215mm
333mm (13") Dual	1400mm*, 1800mm, 2215mm
558mm (22")	1800mm*, 2215mm, 2600mm
782mm (30")	2400mm*, 2800mm, 3400mm

*Standard length; bespoke length head mounts upon special request

