

NEXPTZ2020HD-NET

HD IP EXPLOSION-PROOF PTZ

Honeywell NEXPTZ2020HD-NET is high-speed explosion-proof cameras that follow stringent explosion-proof requirements with creative mechanical strength and design. The well-tested and time-proven solution withstands even the most demanding conditions, suitable to protect and watch over industrial areas.

The cameras feature 2Mega Pixel High Definition, video flip and selectable auto-focus that offers up to 20x optical zoom. The powerful IR cut filter with true Day/Night mode is incorporated to provide vivid daytime color and exceptional night-time imaging under infrared illumination. The built-in wiper ensures the highest possible quality images to be captured year round.

The housing of the NEXPTZ2020HD-NET is designed to meet the most rigorous requirements of explosion-proof electrical equipment installed in hazardous locations, in compliance with major international explosion protected certifications such as Ex d IIC T6, IP67 by IECEx*, and ATEX*. The cameras' built-in receiver unit accesses customers to an easy install.

* IEC: International Electrotechnical Commission

*ATEX: Atmosphere Explosible

Market Opportunities

The demands for High Definition and IP based camera at explosion proof camera system are growing faster within industrial vertical market. The NEXPTZ2020HD-NET is competitively priced explosion-proof cameras with pan/tilt capability, a built-in receiver unit and IP board inside.

Compliant to major international certifications, the cameras are ideal for petrochemical and LNG facilities, oil refineries and other hazardous areas prone to combustible and/or ignitable substances.

FEATURES

- The highest level Ex class : Ex d IIC T6 (IECEEx, ATEX, CE, FCC, KC, CCEs)
- Corrosion-resistant SUS 316 construction and Die casting
- Weather proof: IP67 rating
- High Definition : 2Mega Pixel
- Auto-focus with 20x maximum optical zoom
- 360° continuous pan rotation at a maximum speed of 60°/sec
- Flip function offers 360° continuous tilting



NEXPTZ2020HD-NET

- Various preset functions:
- Built-in wiper
- 4 alarm in and 2 relay out
- Integrated receiver & Network Board
- ONVIF Compliance
- Various RS-485 protocols
- Light weight of approximately 30kg

SPECIFICATIONS

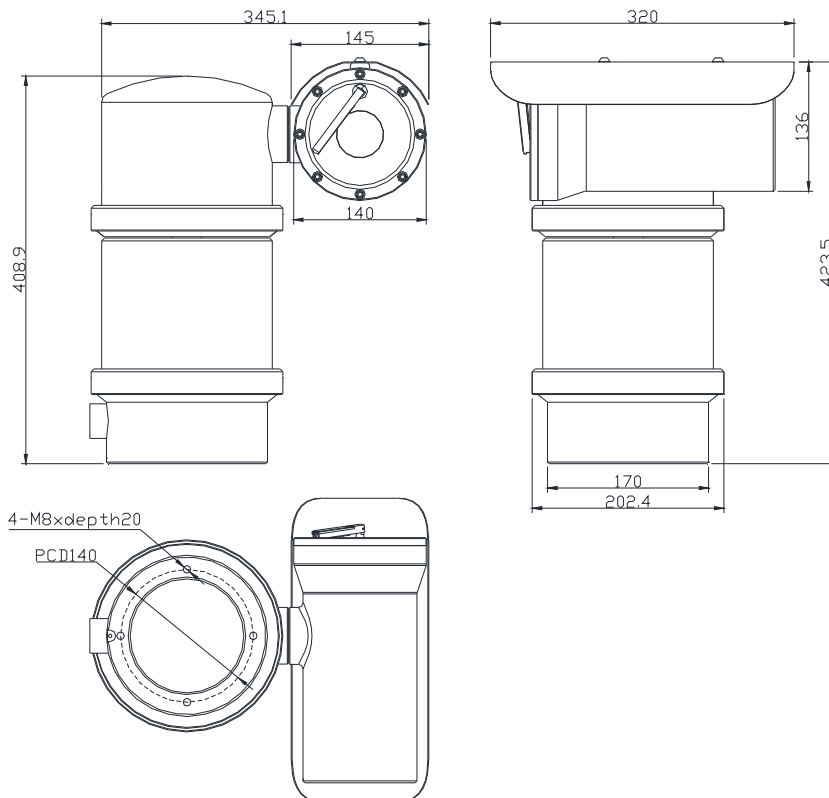
Model	NEXPTZ2020HD-NET
Video	
Image Sensor	1/2.8" 2Megapixel CMOS
Effective Pixels	Approx 2Mega pixels
Minimum Illumination	Color : 1.7lx@F1.6, 50IRE, High Sensitivity : 0.5lx@F1.6, 50IRE BW : 0.3lx@F1.6, 50IRE, High Sensitivity : 0.1lx@F1.6, 50IRE
Shutter Speed	1 ~ 1/10,000sec
Focal Length	f=4.7mm ~ 94.0mm
Zoom Ratio	20x optical zoom, 10x digital zoom, 200x total zoom
Aperture Range	F1.6 (wide) ~ F3.5 (tele)
Day/Night Switch	Auto / Day / Night (ICR)
White Balance	Auto / Manual / Indoor / Outdoor / One-push
WDR	Auto / Manual
Pan, Tilt, Zoom	
Pan Angle	360° continuous rotation
Tilt Angle	360° continuous rotation
Pan / Tilt Speed	0.5° ~ 60°/sec, max 60°/sec
PTZ Tours	4 tours
Pattern	4 patterns
Preset Position	128 positions with focus, iris, BLC setting
Scan	8 scans
Control	RS-485
Protocol	Auto, S2, S2E, Pelco P/D, EZ, VCL, KD6, etc
Alarm	
Alarm Input	4 normal dry contacts (NC / NO selectable)
Relay Output	2 normal relay 24V DC / 1A max. (NC / NO selectable)
Network	
Video Compression	H.264, MJPEG (Dual Stream)
Resolution	Max. 1080P @ 30fps
Network Interface	RJ45 (10/100 Base-T)
Protocol	TCP, IP, HTTP, DHCP, TFTP, DNS, DDNS, NTP, ICMP, SNMP, SMTP, UPnP, RTP, RTSP

NEXPTZ2020HD-NET

Electrical	
Power Supply	100 ~ 240V AC, 50/60Hz
Power Consumption	Max 150W
Mechanical	
Weight	Approx. 30kg
Viewing Window	Ground and polished, fully tempered plate glass
Construction	SUS 316, Die Cast
Mounting	Pedestal mount, Wall mount, Corner mount, Pole mount
Control Connector	9pin FFC cable
Environmental	
Protection Class	IP67
Operating Temperature	Operating : -20°C ~ 60°C
Regulatory	
Certification	Ex d IIC T6 / ATEX II 2 G / CE / FCC / KC

DIMENSIONS

(Unit: mm)



NEXPTZ2020HD-NET

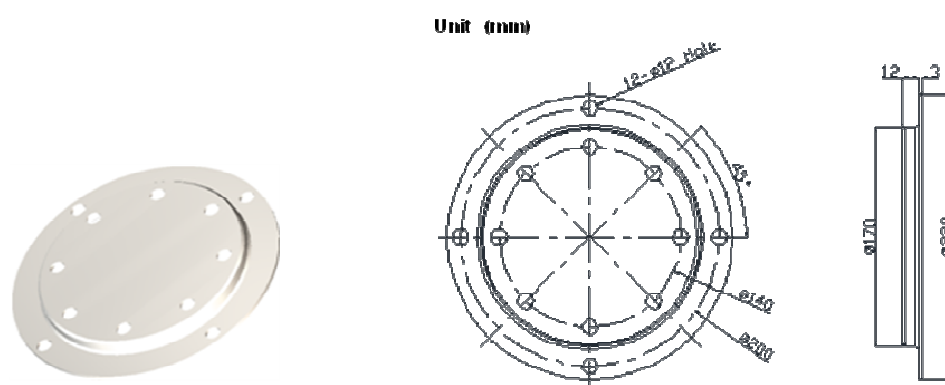
ORDERING

Model	Description
NEXPTZ2020HD-NET	High-speed Explosion-proof PTZ, 20x, 2MP, Pan/Tilt: 360° continuous rotation, Speed: 0.5° ~ 60°/sec, Preset, Tour, Pattern, Auto Scan, Wiper, Free voltage, Integrated Network Board
NEXPTZ-PD	Pedestal mount bracket
NEXPTZ-WL	Wall mount bracket
NEXPTZ-CN	Corner mounting Adaptor
NEXPTZ-PL	Pole mounting Adaptor

ACCESSORIES

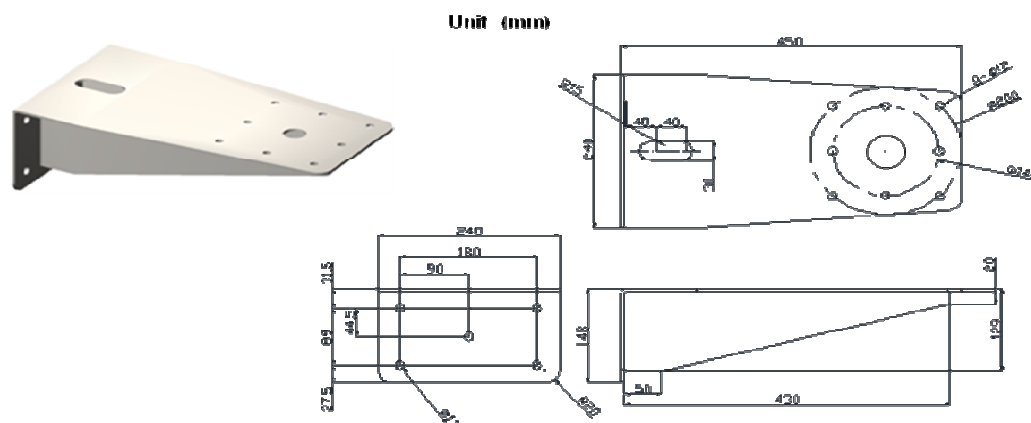
Pedestal mount bracket (NEXPTZ-PD)

Designed to mount NEXPTZ Series directly to a horizontal surface in either an upright or inverted position.



Wall mount bracket (NEXPTZ-WL)

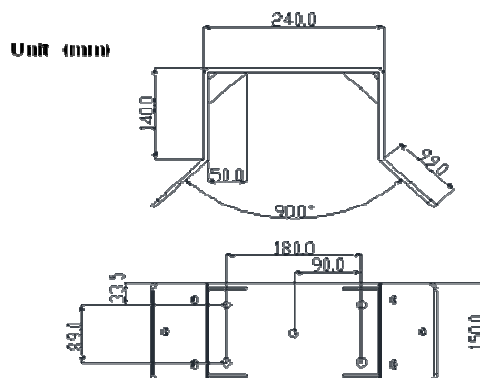
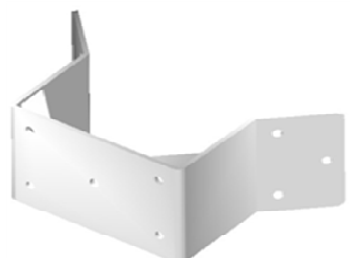
Designed to mount the NEXPTZ Series Camera directly to a load-bearing vertical surface.



NEXPTZ2020HD-NET

Corner adapter Bracket (NEXPTZ-CN)

for use with the NEXPTZ-WL to mount the NEXPTZ Series Camera to the corner of a structure.



Pole adapter Bracket (NEXPTZ-PL)

for use with the NEXPTZ-WL to mount the NEXPTZ Series Camera to a vertical pole or itself to mount the NEXPTZ Series to a horizontal pole.

* Recommended pole diameter is 12cm to 25cm.

